



**US Army Corps
of Engineers**

Vicksburg District
4155 Clay Street
Vicksburg, MS 39183-3435
www.mvk.usace.army.mil

Public Notice

APPLICATION NO.:	MVK-2022-731
EVALUATOR:	Mr. William McFarland
PHONE NO.:	(601) 631 5721
E-MAIL:	William.J.McFarland@usace.army.mil
DATE:	December 19, 2024
EXPIRATION DATE:	January 20, 2025

Interested parties are hereby notified that the U.S. Army Corps of Engineers, Vicksburg District, is considering a proposal to establish a mitigation bank in Bossier Parish, Louisiana. A prospectus describing the proposed bank has been received from Stillhouse Partners, LLC. The Stillhouse Bayou Mitigation Bank (SBMB) site is located in Sections 18 and 19, Township 23 North, Range 13 West and Section 24, Township 23 North, Range 14 West (project coordinates: 32.973588, -93.755378).

Description: This wetland and stream mitigation bank is being proposed by the bank sponsor as a means to meet the requirements for compensatory mitigation for future, and as yet unknown, wetland functional losses that would be permitted by the Corps under the authority of Section 404 of the Clean Water Act.

The Bank Sponsor proposes to develop a mitigation bank that would encompass approximately 852.25 acres of land in which restoration, enhancement and preservation activities are proposed. The sponsor of the SBMB is Stillhouse Partners, LLC (Stillhouse). The goal of Stillhouse will be to conduct bottomland hardwood wetland, instream, riparian buffer, upland buffer, and upland stream buffer restoration, enhancement, and preservation activities on the SBMB (Tract or Site). The restoration and enhancement of wetlands would increase wetland function, provide species diversity for migratory waterfowl, and increase the width of a wildlife corridor along the Mississippi Alluvial Valley.

Baseline Conditions / Current Land Use / Proposed Actions: 852.25-acre tract of the proposed SBMB currently contains approximately 44.02 acres of bottomland hardwood wetlands, 430.16 acres of herbaceous wetlands, 92.93 acres of forested uplands, 266.53 acres of upland pasture, and 12.65 acres of jurisdictional non-wetland waters. The Tract also contains 2.64 acres of powerline ROW, 2.36 acres of existing roads, and 0.96 acres of access roads to be degraded.

The existing and historic land use is primarily cattle grazing, soybean production, and pecan production.

Dominant habitat types associated with the jurisdictional wetlands on the tract consists of bottomland hardwood forested wetlands and herbaceous wetlands. Dominant species identified in these habitats include: American buckwheatvine (*Brunnichia ovata*), white-edge sedge (*Carex debilis*), water hickory (*Carya aquatica*), common buttonbush (*Cephalanthus occidentalis*), long-leaf wood-oats (*Chasmanthium sessiliflorum*), red-top cut-throat grass (*Coleataenia rigidula*), Virginia dayflower (*Commelina virginica*), river-flat hawthorn (*Crataegus opaca*), Bermuda grass (*Cynodon dactylon*), marsh flat sedge (*Cyperus pseudovegetus*), common persimmon (*Diospyros virginiana*), blunt spike-rush (*Eleocharis obtusa*), prostrate sandmat (*Euphorbia prostrata*), green ash (*Fraxinus pennsylvanica*), honey-locust (*Gleditsia triacanthos*), soybean (*Glycine max*), crimson-eyed rose-mallow (*Hibiscus moscheutos*), deciduous holly (*Ilex decidua*), annual marsh-elder (*Iva annua*), lamp rush (*Juncus effusus*), Chinese privet (*Ligustrum sinense*), wing-leaf primrose-willow (*Ludwigia decurrens*), powderpuff (*Mimosa strigillosa*), fall panic grass (*Panicum dichotomiflorum*), wand panic grass (*Panicum virgatum*), Vasey's grass (*Paspalum urvillei*), dotted smartweed (*Persicaria punctata*), water oak (*Quercus nigra*), cherry-bark oak (*Quercus pagoda*), willow oak (*Quercus phellos*), angle-stem beak sedge (*Rhynchospora caduca*), southern dewberry (*Rubus trivialis*), peatree (*Sesbania herbacea*), sawbrier (*Smilax glauca*), horsebrier (*Smilax rotundifolia*), eastern poison ivy (*Toxicodendron radicans*), and American elm (*Ulmus americana*).

Dominant species identified within upland habitats include: annual ragweed (*Ambrosia artemisiifolia*), peppervine (*Ampelopsis arborea*), giant cane (*Arundinaria gigantea*), American buckwheatvine, American beauty-berry (*Callicarpa americana*), trumpet-creeper (*Campsis radicans*), love-in-a-puff (*Cardiospermum halicacabum*), white-edge sedge, water hickory, pecan (*Carya illinoensis*), sugarberry (*Celtis laevigata*), long-leaf wood-oats, river-flat hawthorn, hogwort (*Croton capitatus*), Bermuda grass, common persimmon, green-ash, honey-locust, soybean, crimson-eyed rose-mallow, little barley (*Hordeum pusillum*), Chinese privet, perennial rye grass (*Lolium perenne*), wing-leaf primrose-willow, Vasey's grass, beefsteakplant (*Perilla frutescens*), water oak, willow oak, southern dewberry, horsebrier, eastern poison ivy, American elm, river-bank grape (*Vitis riparia*), and muscadine (*Vitis rotundifolia*).

The property contains the following soil types: Armistead clay, Bossier clay, Buxin clay, Gallion silty clay loam, Mollicy-Guyton complex, Moreland clay, and Sacul fine sandy loam. Bossier clay, Buxin Clay, Mollicy-Guyton complex, Moreland clay, and Sacul fine sandy loams are listed as hydric soils.

The Sponsor proposes to conduct bottomland hardwood wetland, instream, riparian buffer, upland buffer, and upland stream buffer activities on the SBMB. Bottomland hardwood wetland activities will consist of 375.31 acres of prior converted croplands wetland restoration and 33.02 acres of preservation. Upland buffer activities will consist of 247.90 acres of restoration, 58.94 acres of enhancement, and 30.0 acres of preservation.

Stream and riparian buffer activities total 99.28 acres. In-stream activities will consist of 10.45 acres (22,066 linear feet) of Priority 1 restoration. Riparian buffer activities will consist of 10.34 acres of stream buffer bottomland hardwood preservation, and 51.12 acres of stream buffer bottomland hardwood restoration (herbaceous wetlands).

Upland stream buffer activities will consist of 1.11 acres of preservation and 26.26 acres of restoration (upland pasture).

The SBMB will also contain an additional 0.46 acres of stream preservation where no in-stream or riparian buffer work will be conducted.

Remaining acreage associated with the SBMB, not proposed for restoration, enhancement, and preservation activities includes 4.70 acres of roads and 2.64 acres of power line ROW.

Service Area: This Mitigation Bank will be established to provide mitigation to compensate for impacts to waters of the United States, including wetlands, within the State of Louisiana. This area is demarcated by the United States Geological Survey as hydrologic unit code 11140201, 11140204, and 11140202 within the McKinney-Posten Bayous Watershed. Decisions authorizing the use of credits from the Mitigation Bank would be made by the appropriate authority on a case-by-case basis, in accordance with all applicable requirements.

The prospectus, which outlines the conceptual plan for the bank, is available at the following website:

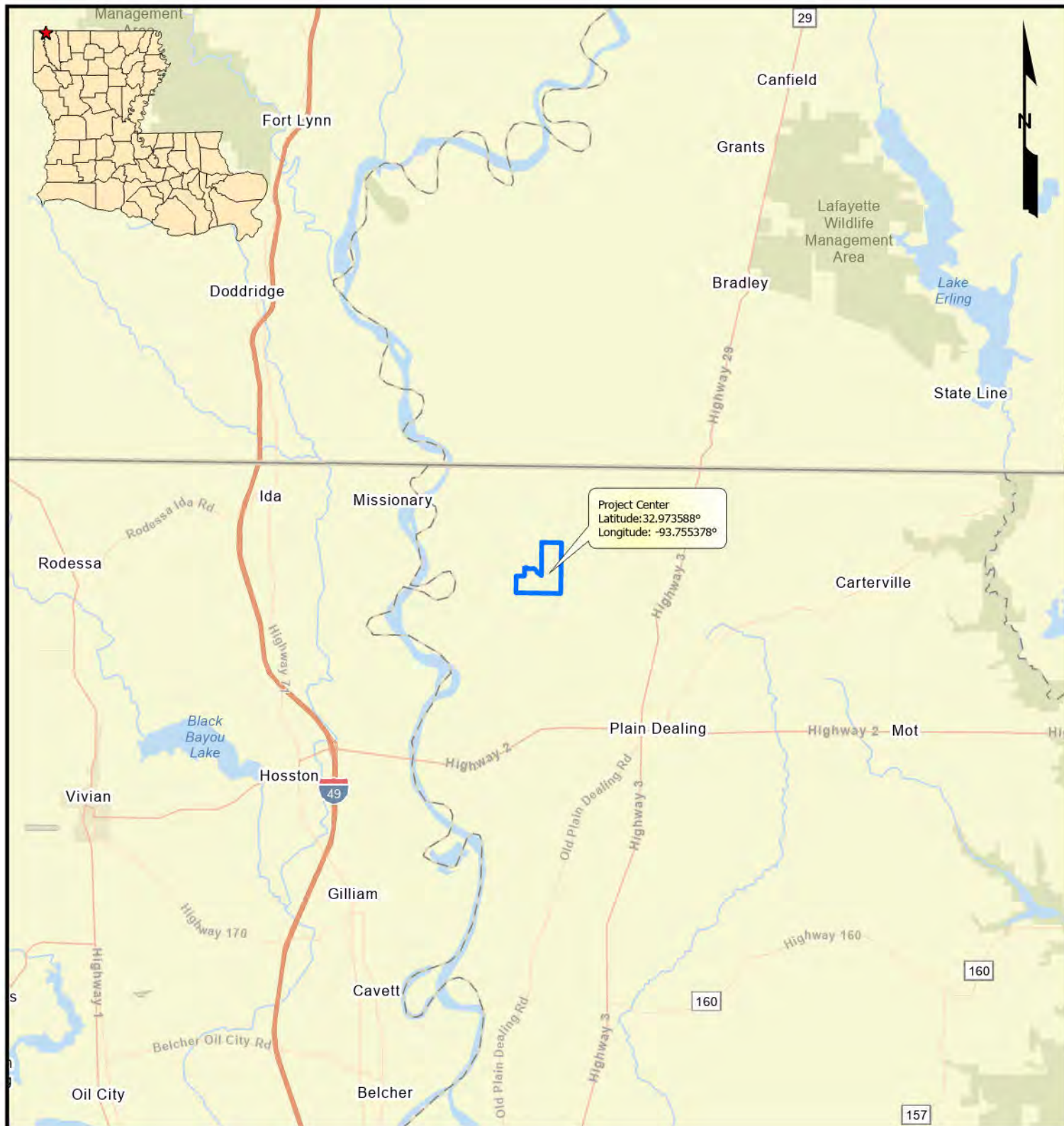
<https://www.mvk.usace.army.mil/Missions/Regulatory/Public-Notices/>

Comments on this proposed mitigation bank may be provided to the Corps at the address below. Comments should be received no later than the expiration date of this public notice.

Please provide comments to:

**U.S. Army Corps of Engineers
Vicksburg District
Attention: CEMVK-RD
4155 Clay Street
Vicksburg, Mississippi 39183-3485**

**For Andy Sanderson
 Chief, Louisiana/Arkansas Branch
 Regulatory Division**



Legend

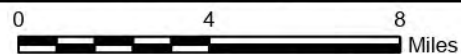
- ☐ Stillhouse Bayou Mitigation Bank (852.25 Acres)

Vicinity Map

Mitigation Bank Prospectus

Bossier Parish, Louisiana

Stillhouse Partners, LLC
Stillhouse Bayou Mitigation Bank

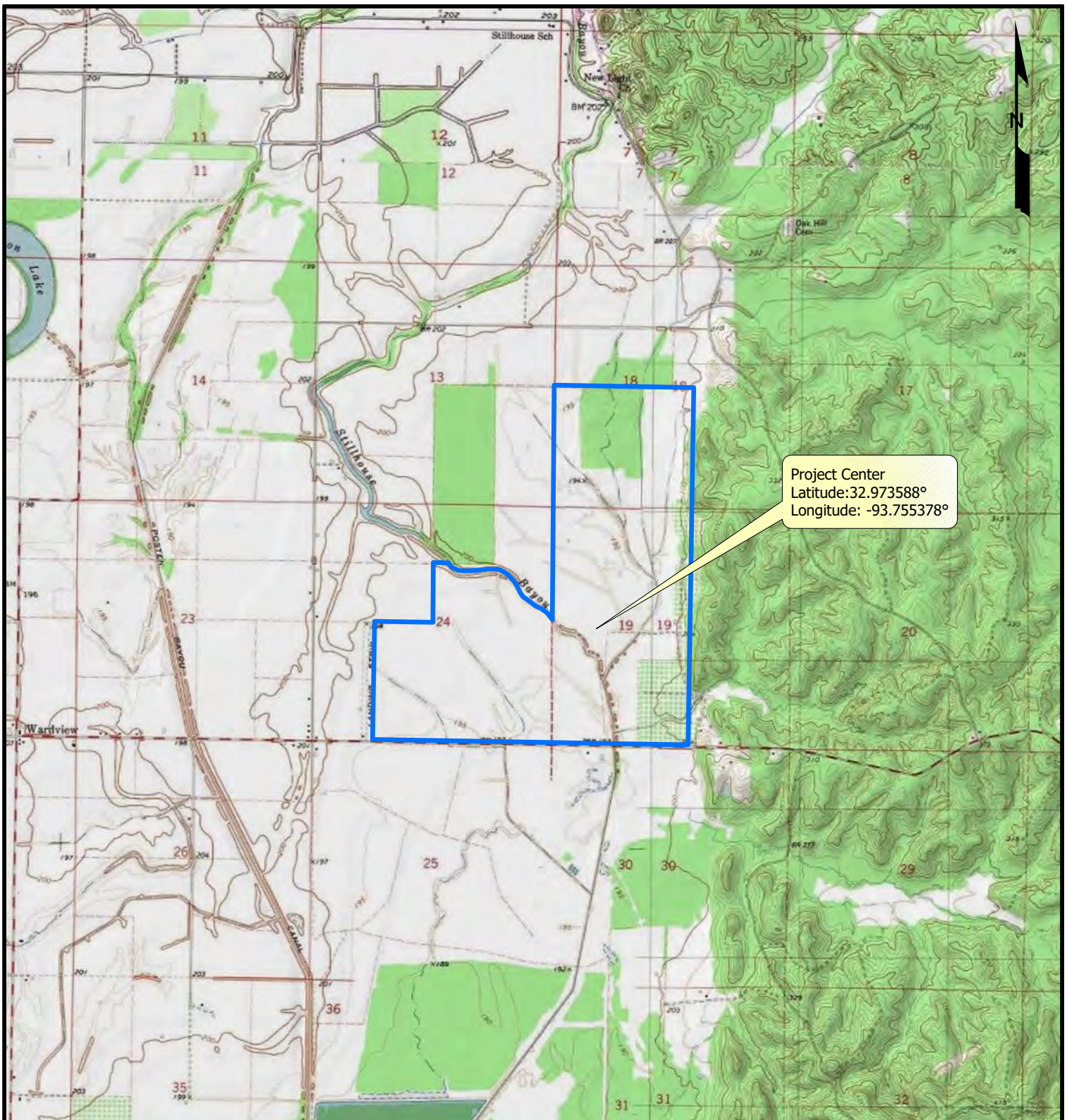


MATRIX**NEW**WORLD
Engineering Progress

Drawn By	CDG
Approved By	LAW
Date	2/13/2024
Drawing No.	22-0952-021

1
Exhibit No.

Source: Base map comprised of ESRI StreetMap USA data.



Project Center
Latitude: 32.973588°
Longitude: -93.755378°

Legend

 Stillhouse Bayou Mitigation Bank (852.25 Acres)

Site Location Map

Mitigation Bank Prospectus

Bossier Parish, Louisiana

Stillhouse Partners, LLC

Stillhouse Bayou Mitigation Bank

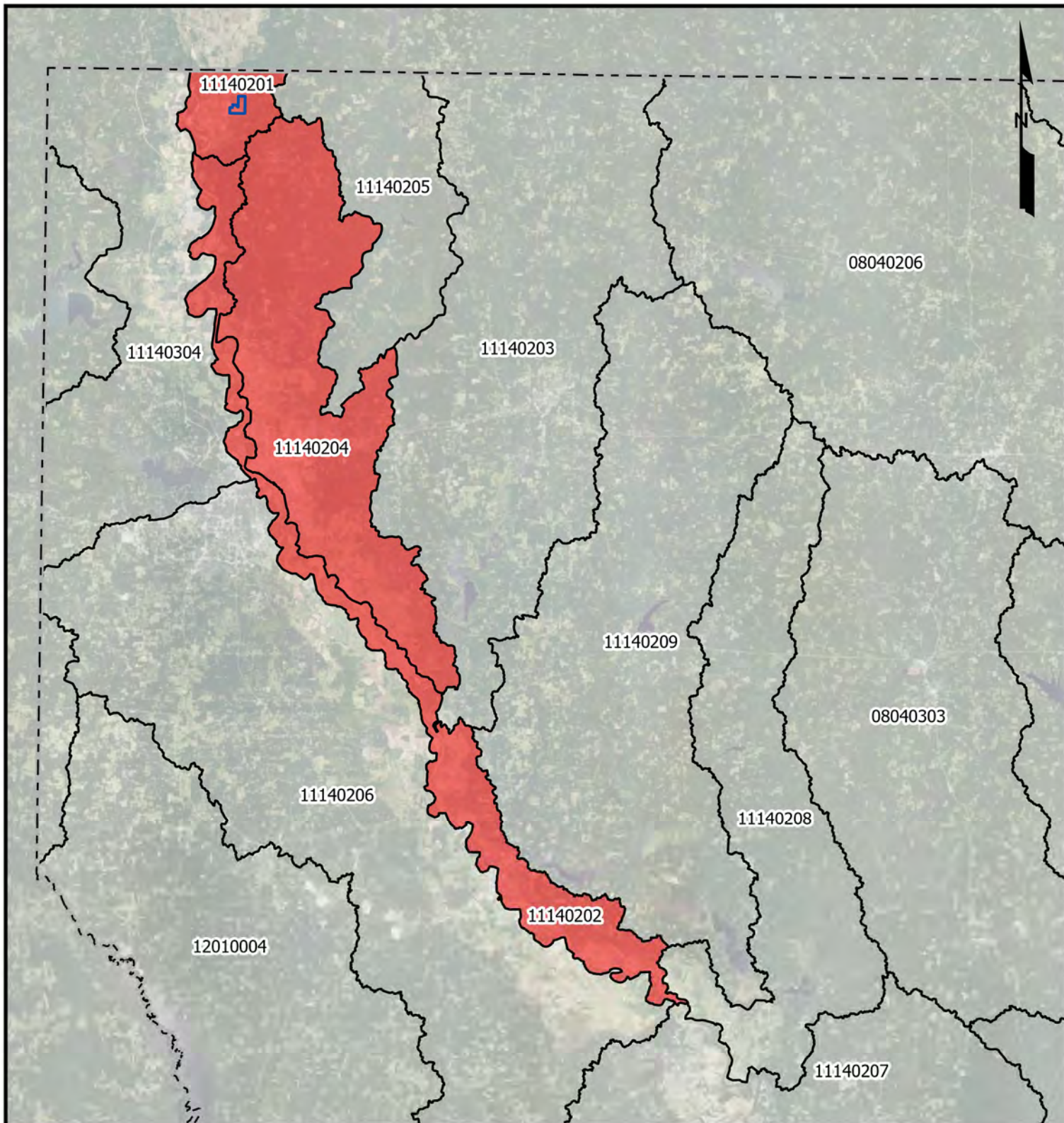
MATRIX**NEW**WORLD
Engineering Progress

Drawn By	CDG
Approved By	LAW
Date	4/17/2024
Drawing No.	22-0952-022

2

Exhibit No.

Source: Base map comprised of USGS Topographic Map Data



Legend

- Stillhouse Bayou Mitigation Bank (852.251 Acres)
- Primary Service Area (11140202, 11140204, 11140201)
- Hydrologic Unit Boundary
- Louisiana State Boundary

Source: Base map comprised of USGS Topographic Map Data

Mitigation Bank Service Area Map

Mitigation Bank Prospectus
Bossier Parish, Louisiana

Stillhouse Partners, LLC
Stillhouse Bayou Mitigation Bank

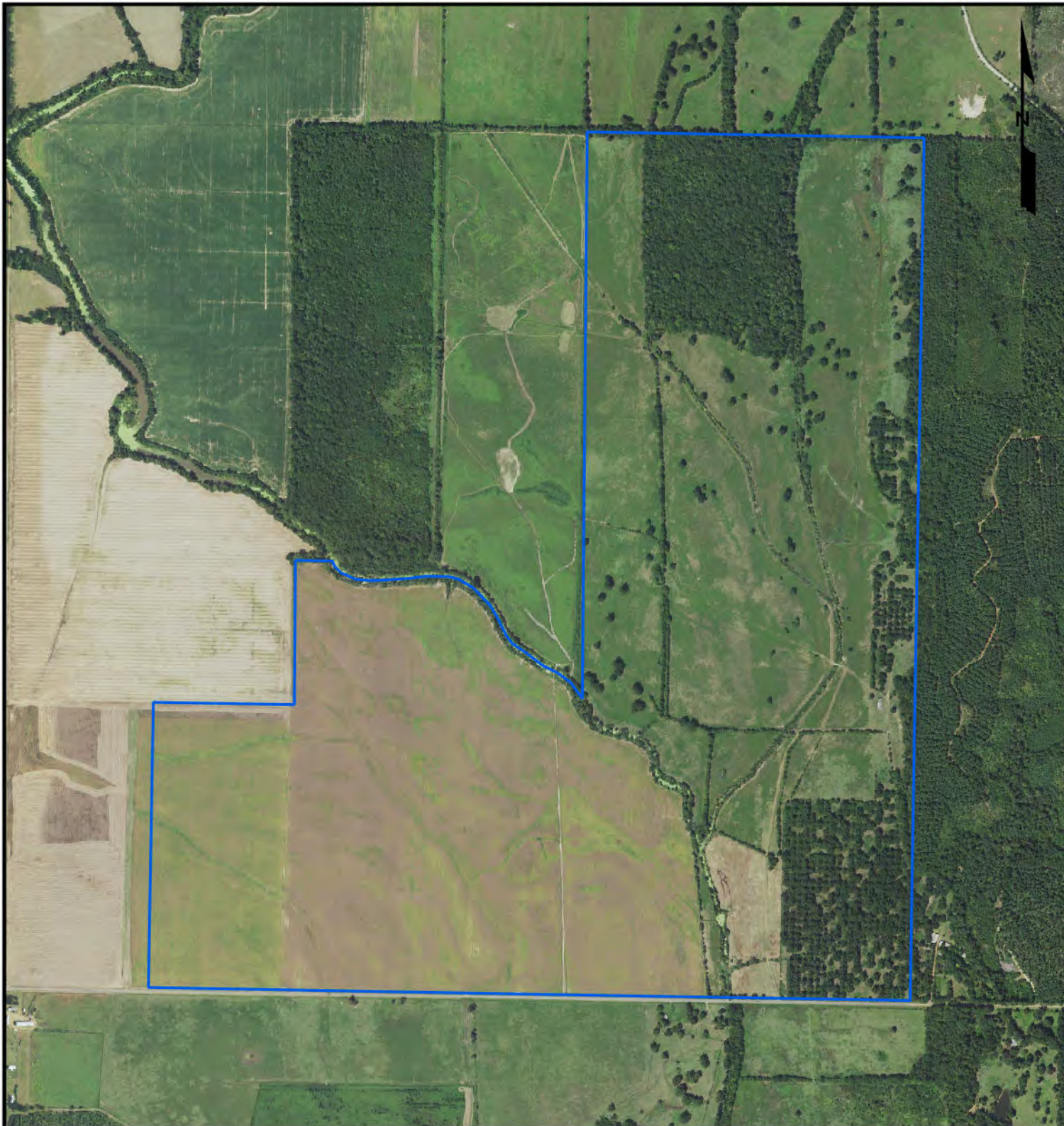
0 10 20
Miles

MATRIX**NEW****WORLD**
Engineering Progress

Drawn By	CDG
Approved By	LAW
Date	2/14/2024
Drawing No.	22-0952-023

3

Exhibit No.



Legend

☐ Stillhouse Bayou Mitigation Bank (852.25 Acres)

2017 Aerial Photograph

Mitigation Bank Prospectus

Bossier Parish, Louisiana

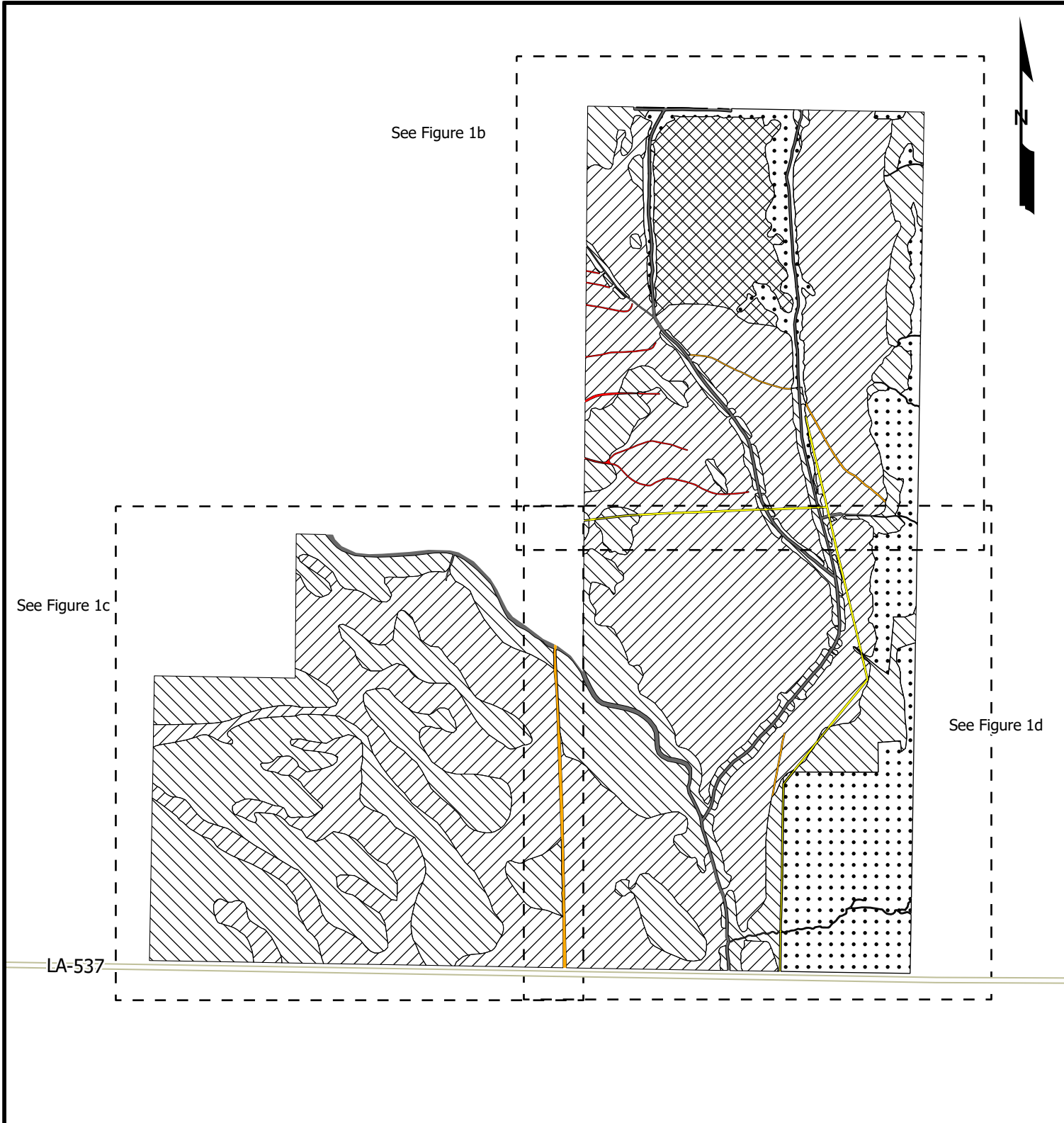
Stillhouse Partners, LLC

MATRIX**NEW**WORLD
Engineering Progress


Drawn By	CDG
Approved By	LAW
Date	2/13/2024
Drawing No.	22-0952-032

12
Exhibit No.


Source: Base map comprised of USGS Topographic Map Data





Legend


 Stillhouse Bayou Mitigation Bank (852.25 Acres)


Habitat

 Existing Access Road to Remain (2.36 Acres)


 Existing Access Road to be Degraded (0.96 Acres)

 Existing Forested Uplands (92.93 Acres)

 Existing Herbaceous Uplands (266.53 Acres)

 Existing Streams (12.65 Acres)

 PFO Wetlands (44.02 Acres)

 Prior Converted (PEM) Wetlands (430.16 Acres)

 SWEPCO 15' Powerline Easement (2.64 Acres)

Pre-Restoration Site Plan (Overview)

Mitigation Bank Prospectus
Bossier Parish, Louisiana

Stillhouse Partners, LLC

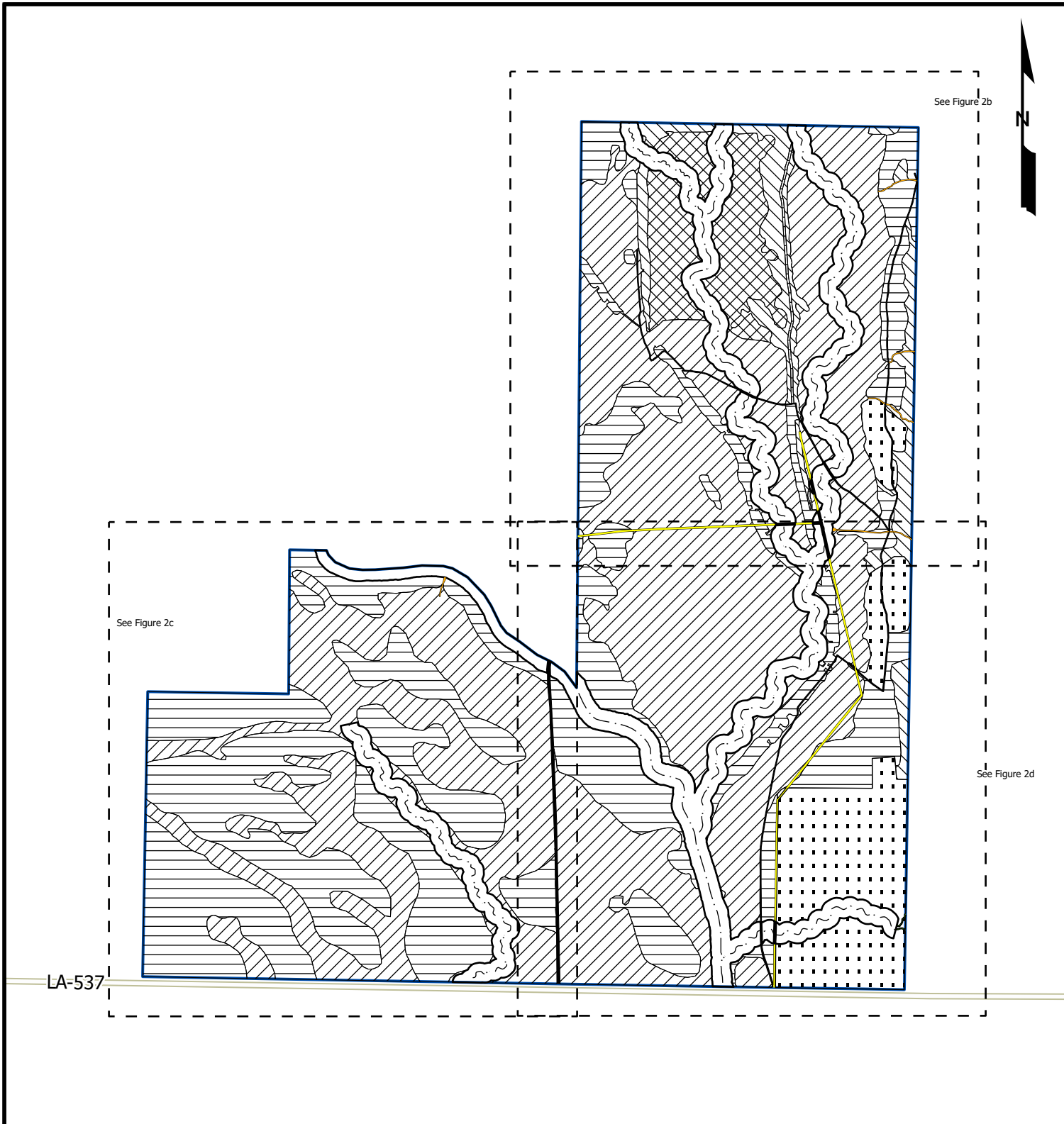
Stillhouse Bayou Mitigation Bank

0 1,000 2,000
Feet


MATRIXNEWORLD
Engineering Progress

Drawn By	CDG
Approved By	LAW
Date	11/20/2024
Drawing No.	22-0952-016


1a
Figure No.




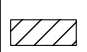
Legend

 Stillhouse Bayou Mitigation Bank (852.25 Acres)

Habitats

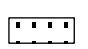
 Access Roads; Non-Mitigation (4.70 Acres)

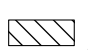
 Streams and Stream Buffers (See Attached Stream Design Plans) (99.28 Acres)

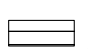
 Bottomland Hardwoods Restoration (375.31 Acres)


 Bottomland Hardwoods Preservation (33.02 Acres)


 SWEPCO 15' Powerline Easement (2.64 Acres)

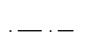
 Upland Buffer Enhancement (58.94 Acres)


 Upland Buffer Preservation (30.00 Acres)

 Upland Buffer Restoration (247.90 Acres)

 Ephemeral Drain Preservation (0.40 Acres)

 Stream Preservation (No In-Stream Work) (0.06 Acres)

 Priority 1 Stream Restoration

 Priority 2 Stream Restoration

Post-Restoration Site Plan (Overview)

Mitigation Bank Prospectus
Bossier Parish, Louisiana

Stillhouse Partners, LLC

Stillhouse Bayou Mitigation Bank

0 1,000 2,000
Feet

MATRIXNEWORLD
Engineering Progress

Drawn By	CDG
Approved By	LAW
Date	11/20/2024
Drawing No.	22-0952-018

2a
Figure No.

LEGEND

SITE BOUNDARY

EXISTING WETLANDS

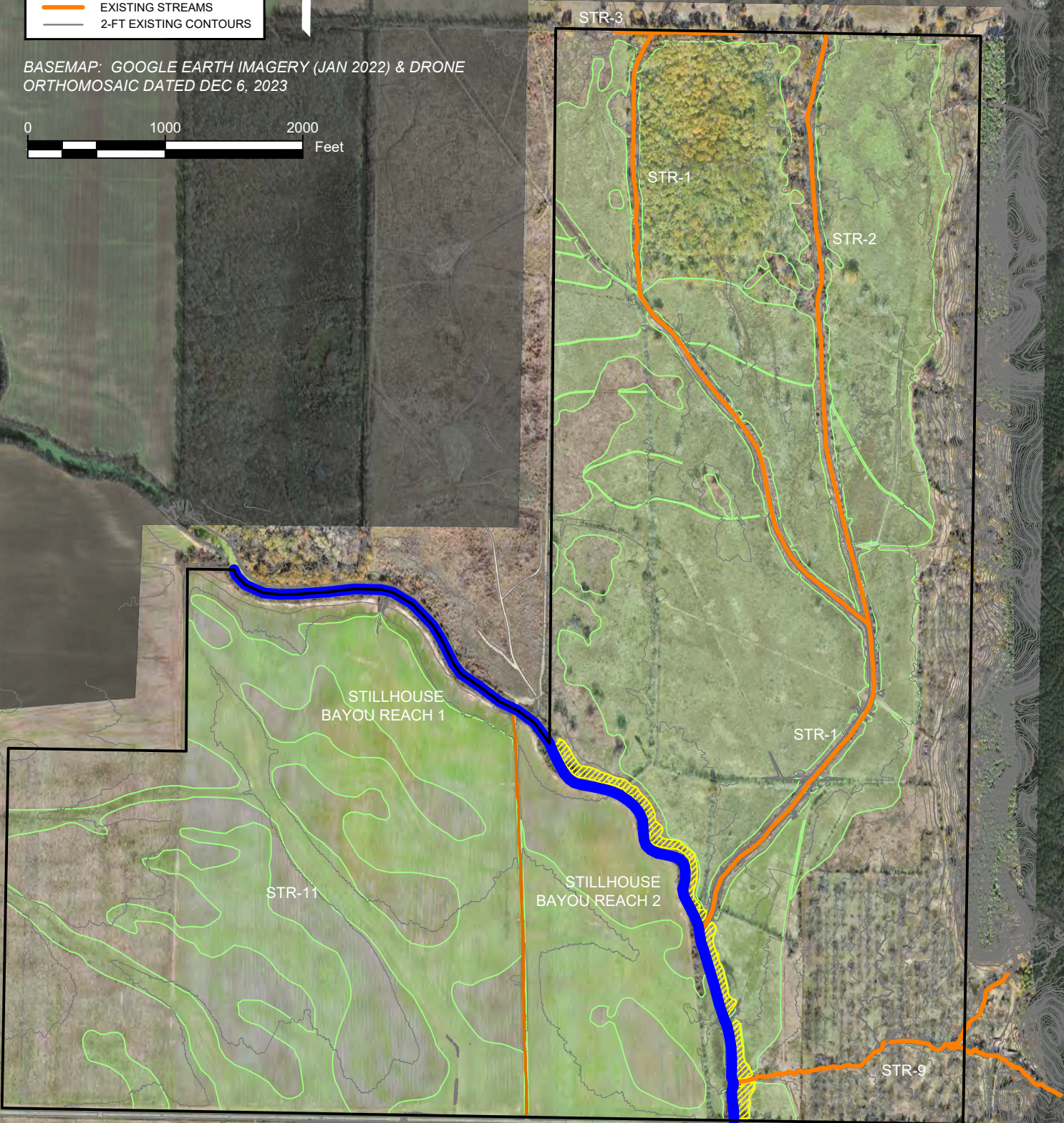
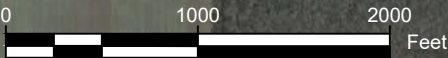
EXISTING BERM

STILLHOUSE BAYOU

EXISTING STREAMS

2-FT EXISTING CONTOURS

BASEMAP: GOOGLE EARTH IMAGERY (JAN 2022) & DRONE
ORTHOMOSAIC DATED DEC 6, 2023



STREAM ID	TREATMENT	LENGTH (FT)
SB R1	BUFFER WORK (RIGHT SIDE)	2,846
SB R1	ENHANCEMENT (LEFT SIDE)	3,380
STR-1	P1 RESTORATION	9,068
STR-2	P1 RESTORATION	5,517
STR-3	P1 RESTORATION	1,450
STR-9	P1 RESTORATION	2,098
STR-11	P1 RESTORATION	3,933
TOTAL	---	28,292

P1 = PRIORITY 1, R = REACH
 SB = STILLHOUSE BAYOU, ENHANCEMENT = BERM REMOVAL
 BASEMAP: GOOGLE EARTH IMAGERY (JAN 2022) & DRONE
 ORTHOMOSAIC DATED DEC 6, 2023

LEGEND

SITE BOUNDARY

RIPARIAN BUFFER

WETLAND (OUTSIDE BUFFER)

EXISTING BERM TO BE REMOVED

EXISTING STREAM

P1 RESTORATION CHANNEL

ENHANCEMENT CHANNEL

2-FT EXISTING CONTOURS

PRIVATE ACCESS ROAD

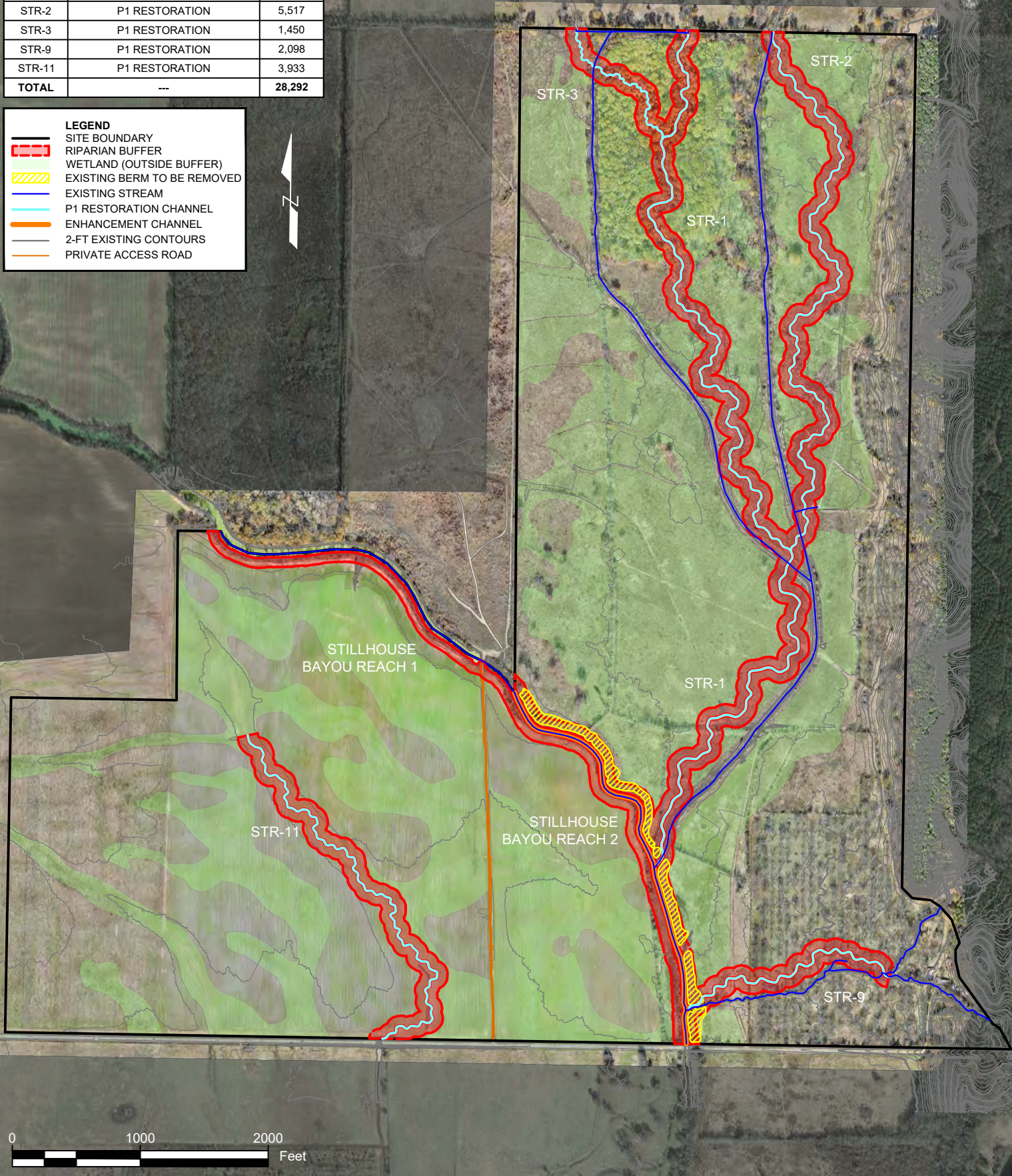


FIGURE 1

MVK-_____-____